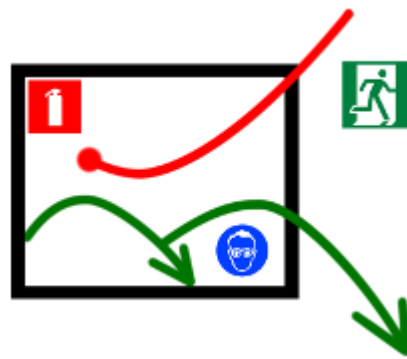


ZWBlocks2020



Krzysztof Ruszyński
Izabela Cholewa

ZWBlocks 2020

Version 2020.1.00 (07-11-2019)

All rights reserved including the right of reproduction in whole or in part in any form. No part of this publication may be reproduced or transmitted in any form or by any means, electronic or mechanical, including photocopying, recording, or by any information storage and retrieval system, without prior permission from Usługi Informatyczne "SZANSA" - Gabriela Ciszynska-Matuszek.

All signs found in the text are trademarks or registered trademarks of their respective owners. Usługi Informatyczne "SZANSA" - Gabriela Ciszynska-Matuszek has made its best effort to deliver complete and reliable information within this manual.

The firm shall not be held liable for the usage, or for any potential breach of patent or copyrights included within the manual.

Usługi Informatyczne "SZANSA" - Gabriela Ciszynska-Matuszek may in no way be held responsible for damage that may occur as a result of and/or when using the information found within the manual.

Usługi Informatyczne "SZANSA" - Gabriela Ciszynska-Matuszek

ul. Świerkowa 25

43-305 Bielsko-Biała

NIP 937-212-97-52





www.zwcad.pl

tel. +48 33 307 01 95

Copyright © Usługi Informatyczne "SZANSA" - Gabriela Ciszynska-Matuszek



Table of Content

1	Description	5
2	Requirements.....	5
3	Support.....	5
4	Installation	5
5	Activation	6
5.1	Online Activation	7
5.2	Offline Activation	7
5.3	Transfer of a license.....	9
5.3.1	Returning the license.....	9
5.3.2	Online return	9
5.3.3	Offline Return	10
6	ZWBlocks 2020 Commands: Explained	12
6.1	Safety signs 	12
6.2	Draw escape route 	14
6.3	Marking „You are here” 	16
7	Updating ZWBlocks 2020 	17
8	Menu Manual Load	17
9	Application Manual Load	18

1 Description

Application helps users to draw emergency evacuation plans. Inserting safety symbols and draw escape route elements

2 Requirements

ZWBlocks is an application (add-on) for ZWCAD 2020. It works with the most recent version of ZWCAD 2020.

3 Support

Technical support is available from 8 am to 4 pm from Monday to Friday, we invite you to contact us by e-mail or telephone.

E-mail: pomoc@zwcad.pl

Phone: 33 474 04 03

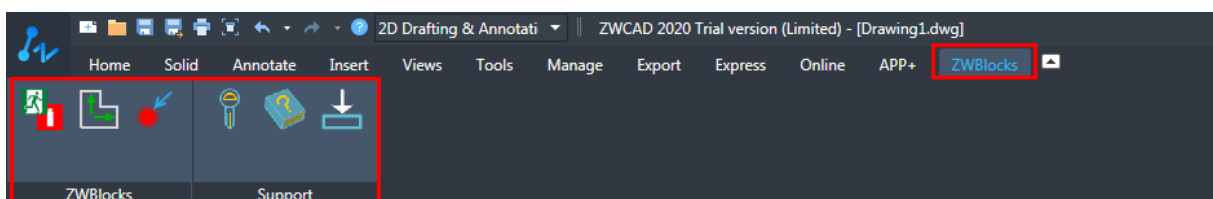
4 Installation

Installation must be completed on an account with administrative privileges.

Application installs automatically after run downloaded installation package.

Default application is installed in folder C:\Szansa\ZWBlocks\2020. In time of installation, it's possible to set different installation path. This is not recommended especially in Windows Vista, Windows 7, Windows 8, Windows 10. Build in UAC function in this systems lock some functions of application.

After correct installation and run ZWCAD. Application ZWBlocks should load automatically. On ZWCAD window, there should be toolbar as below:



5 Activation

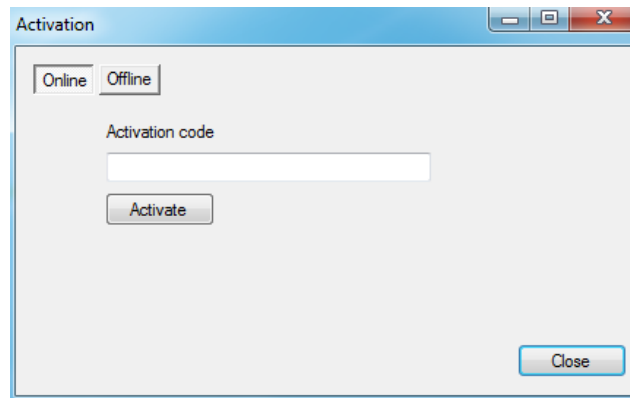
Once the trial period of 30 days runs out, a license will be needed in order to use the program. After receiving the payment, an e-mail with an activation code will be sent.

Usługi informatyczne 'SZANSA' application licences report

Application	Module	Version	Licence type	Licence state	Expiring	The code
ZWBlocks	All	2020	Free	Active	25-07-2019	
ZWBlocks	All	2020	Free	Active	25-07-2019	
ZWBlocks	All	2020	Free	Active	25-07-2019	
ZWBlocks	All	2020	Free	Active	25-07-2019	
ZWBlocks	All	2020	Free	Active	25-07-2019	
ZWBlocks	All	2020	Free	Active	25-07-2019	
ZWBlocks	All	2020	Free	Active	25-07-2019	
ZWBlocks	All	2020	Free	Active	25-07-2019	
ZWBlocks	All	2020	Free	Active	25-07-2019	
ZWBlocks	All	2020	Free	Active	25-07-2019	

[Learn more](#) Activate Return Close

A choice between activating the application online or offline will be present.

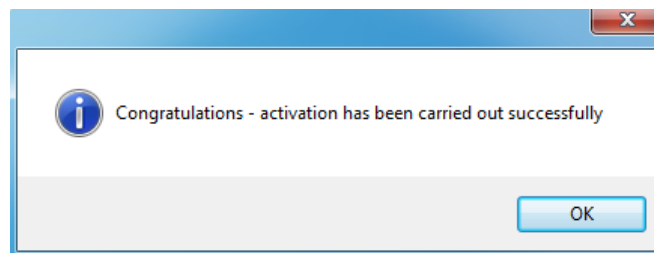


5.1 Online Activation

Please note: Online activation requires an Internet connection. If there is no internet connection available please use the Offline Activation.

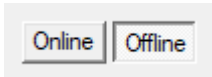
In the field “**Activation code**” please type in the information sent during realization of the order, afterwards click on “**Activate**”.

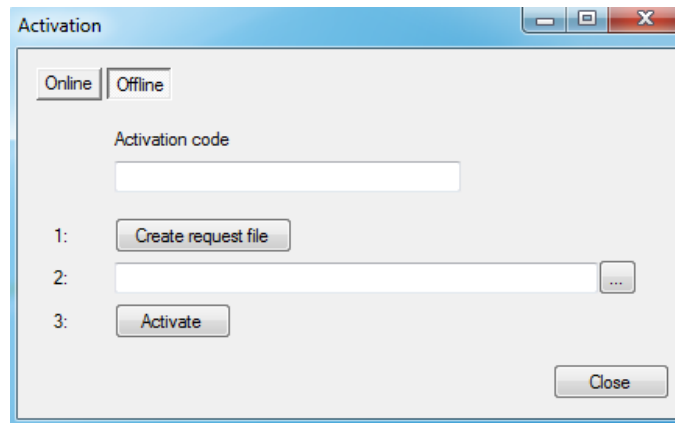
An information window will pop up confirming the activation.



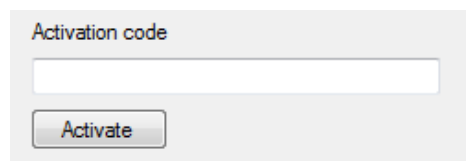
Once ZWCAD is launched, all functions of the program should be loaded and available.

5.2 Offline Activation

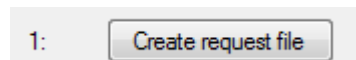
In the “**Offline**” tab  additional steps are required to complete the activation.



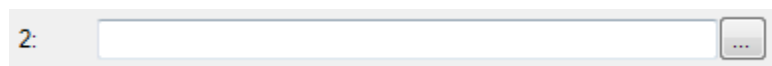
In the field “**Activation code**” please type in the information sent during realization of the order.




Afterwards it is necessary to click on “Create a request file”, it will create an additional file which needs to be saved on the desktop or in any other directory of the computer.

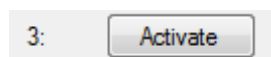


The file needs to be sent in a form of an attachment to, pomoc@zwcad.pl and a reply will consist of response file which then needs to be loaded in the activator:

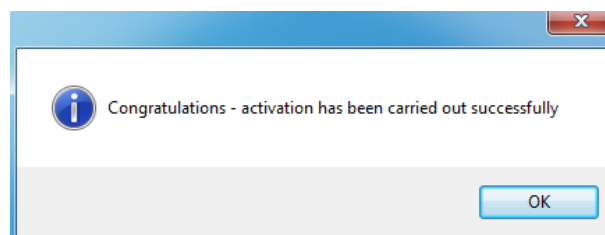


Response file needs to be saved on the computer and its localization needs to be determined by clicking on the following icon .

Once the response file is loaded, click on “**Activate**”.



An information window will pop up confirming the activation.



Once ZWCAD is launched, all functions of the program should be loaded and available.

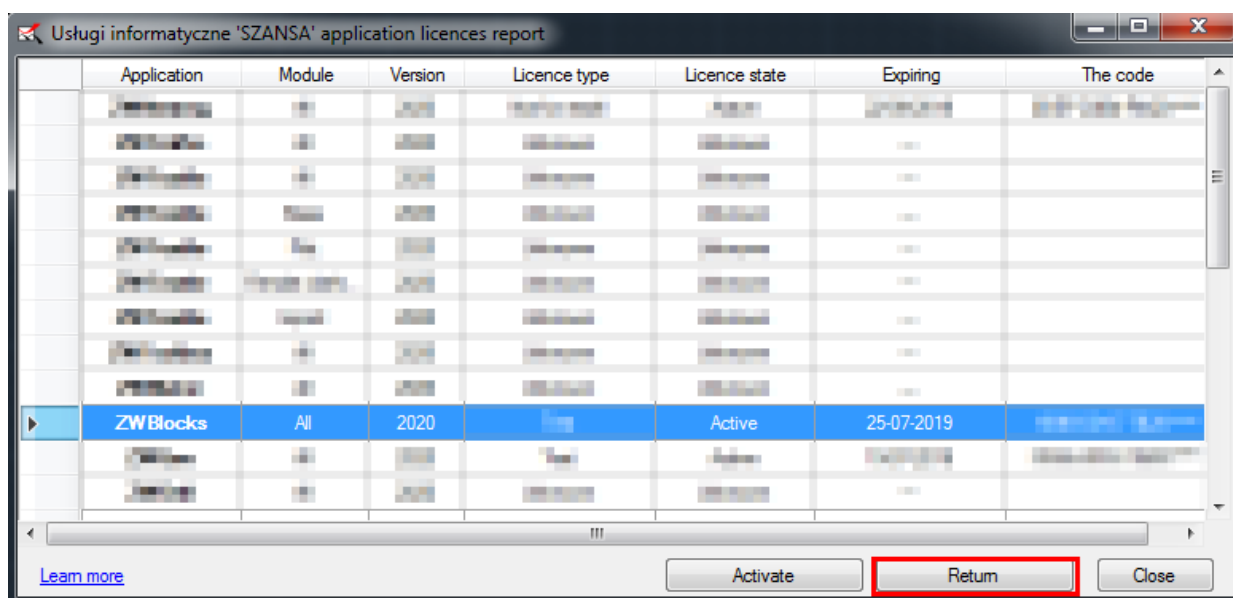
5.3 Transfer of a license

The license of UISZANSA applications in the form of a program code can be transferred to a different workstation.

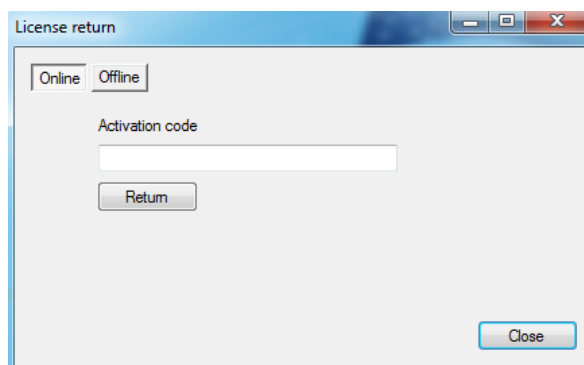
In order to transfer the license to a different computer, it is necessary to return the active license and once that is done, it will be possible to activate the license on a different Workstation.

5.3.1 Returning the license

License return is available in the UISZANSA Activator window.



Once “**Return**” has been clicked on, an additional window will appear in which it will be possible to return the license, either online or offline.

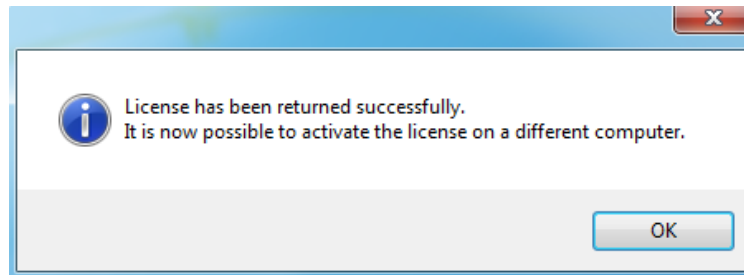


5.3.2 Online return

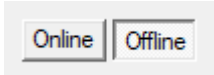
Please note: Online return requires an Internet connection. If there is no internet connection available please use the Offline return (3.1.2 Offline return).

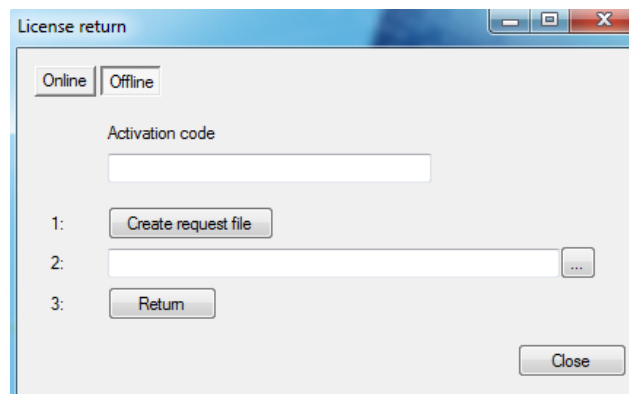
To carry out the online return, please type in your license details followed by clicking on **“Return”** .

Once confirmed, the license will be usable on a different workstation.

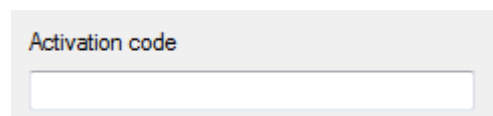


5.3.3 Offline Return

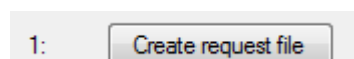
In the **„Offline”** tab  additional steps are required to complete the return of a license.



In the field „Activation code” please type in your license details.




Afterwards it is necessary to click on “Create a request file”, it will create an additional file which needs to be saved on the desktop or in any other directory of the computer.

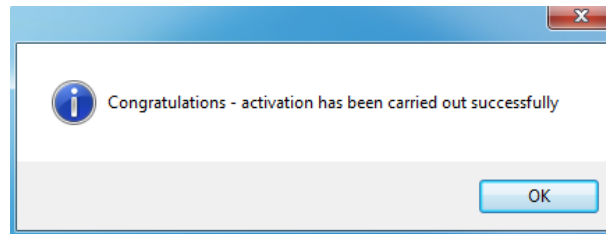


The file needs to be sent in a form of an attachment to, pomoc@zwcad.pl and a reply will consist of response file which then needs to be loaded in the activator:



Response file needs to be saved on the computer and its localization needs to be determined by clicking on the following icon .

Once the response file is loaded, click on **“Return”**



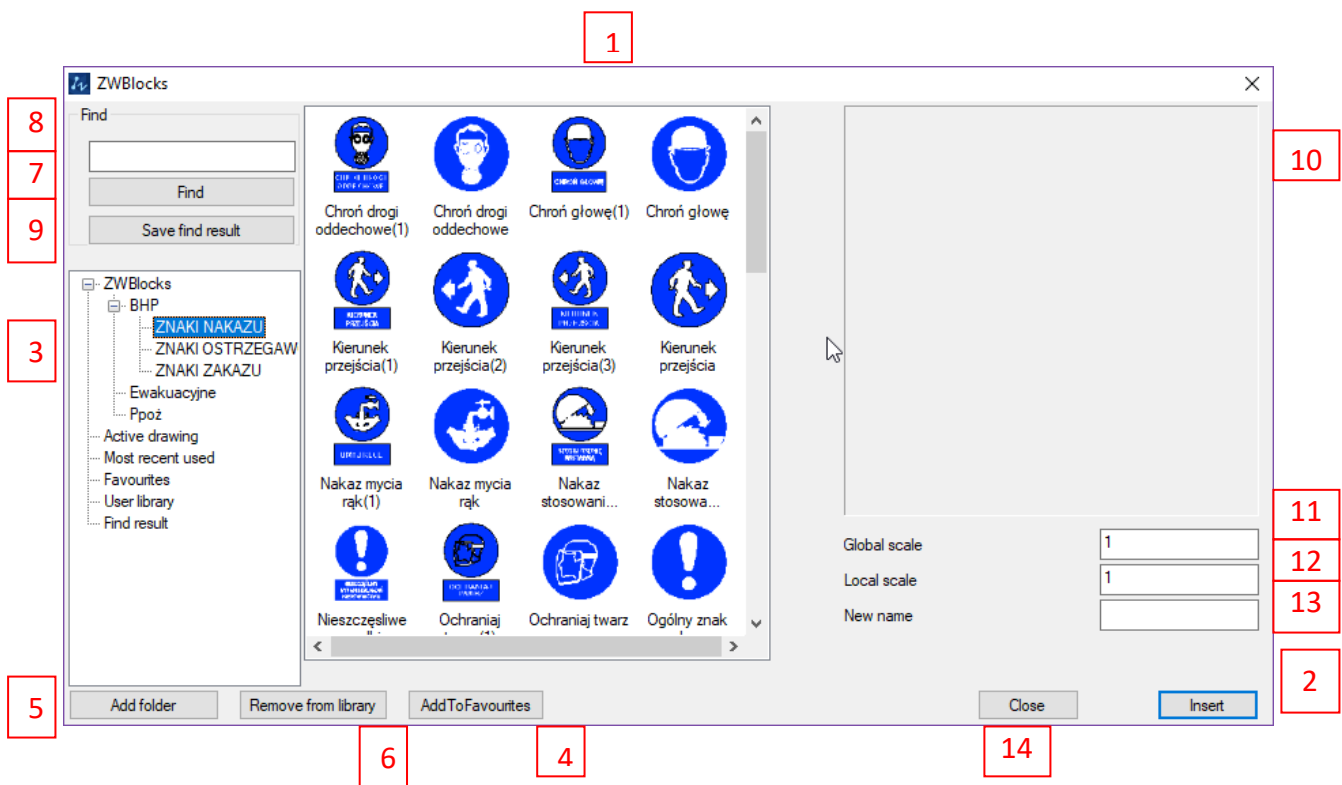
Once ZWCAD is launched, all functions of the program should be loaded and available.

6 ZWBlocks 2020 Commands: Explained

6.1 Safety signs

Command : ZWBLOCKS

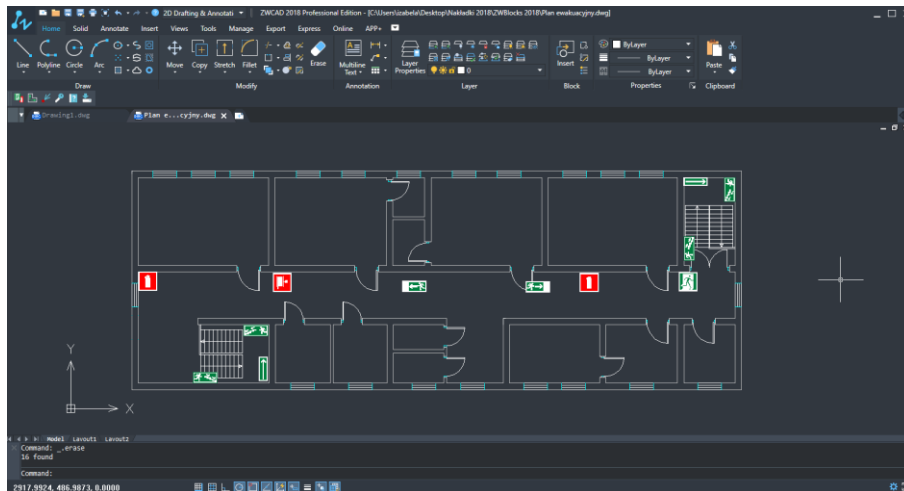
With this function You may insert safety signs into drawing. After run command displayed will be window containing many symbols: Health and Safety, warrant, warning, limitation, evacuation, and fire protection. It's enough to select sign from list [1] and click Insert [2].



Elements of the window:

1. List of blocks / drawings in the current project or directory
2. The "Insert" will insert the selected symbol to the Project
3. Main list of symbols, contains symbols grouped in the categories:
 - Library - symbols are installed together with the overlay
 - Active drawing - symbols used in the Project
 - Most recent used - list of 10 symbols that have been used recently, no matter what the drawing / design

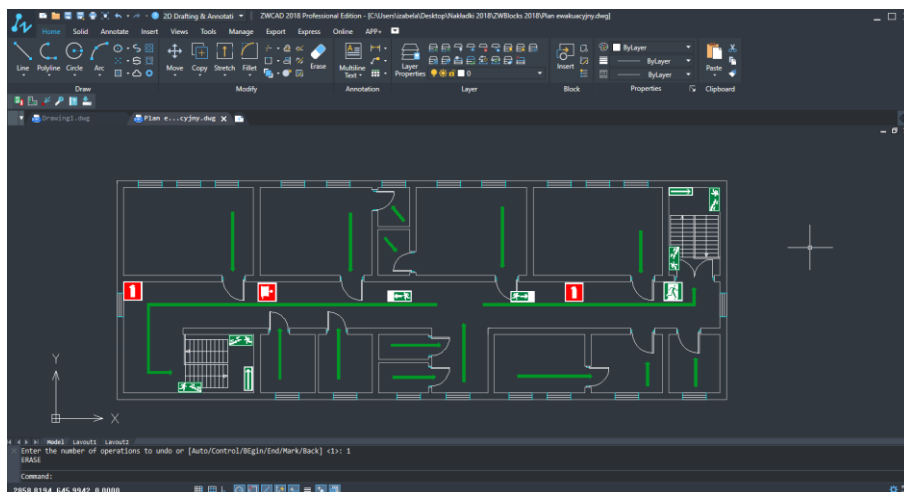
- `Favourites` - symbols can be saved in this list by clicking "Add to Favourites" [4]
 - `User Library` - list of directories on the disk, which you may import to application by pressing the "Add Folder" [5]
 - `Find results` - In position[6], you can search for symbols whose names match the given pattern. In this list, you can save the results of the search.
4. The "Add to favorites" after using it to the main list [3] in position a favorite will be added symbol to the currently selected from the list [1]
 5. The "Add Folder" after using it to the main list [3] in the user Library's will be added symbol to the currently selected from the list [1]
 6. The "Remove from library" button , lets user to remove element added by add to favourites, The most recent used, imported library
 7. The "Find" after using it in a list [1] will display a list of search results from the entire library of symbols whose names match the pattern entered in field [7]
 8. The field for entering a name in the search pattern. Just enter part of the name to determine which elements are to be searched.
 9. The "Save find result". After using it elements are saved in the list [1]. Under the name specified according to the pattern.
 10. Preview of the selected symbol, when you select from the list [1] in window of the symbol will be displayed. Not all blocks are defined preview. For blocks that do not have previews, it will not be displayed.
 11. `Global scale`. Symbols in each project can be inserted in a different scale. In this field, enter a scale that will be stored at run time.
 12. `Local scale`. Each of the symbols can be inserted in a different scale. The value assigned to this field will be stored for the selected symbol in the current project
 13. `New name`. This field allows you to create a new symbol identical with the chosen and will have a name entered in the field
 14. `Close`. Closes the library.



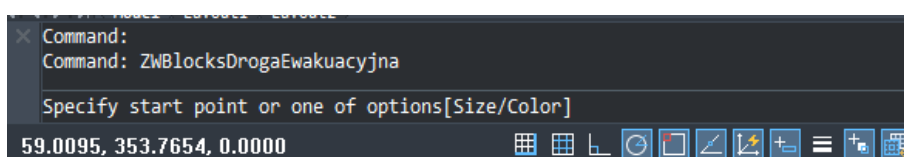
6.2 Draw escape route

Command : ZWBLOCKSDrogaEwakuacyjna

This function let User mark escape route by lead arrows between clicked points. Default arrow is green, width of arrow is 10 units, You can easy change those parameters. When You run command, application will ask You to select first point or You can use one of options Width or Colour, and select parameter You want. In the properties it if possible to change the default parameters.

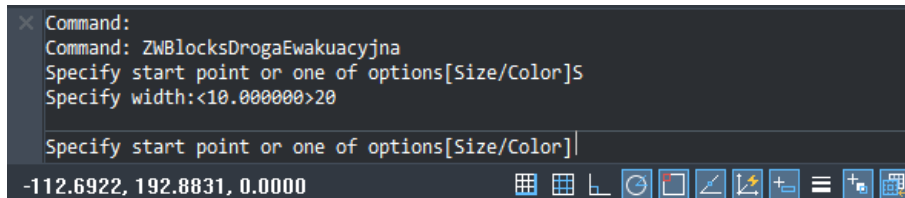


In the properties You can change the default properties: Size and Color.



Change the width of the arrow:

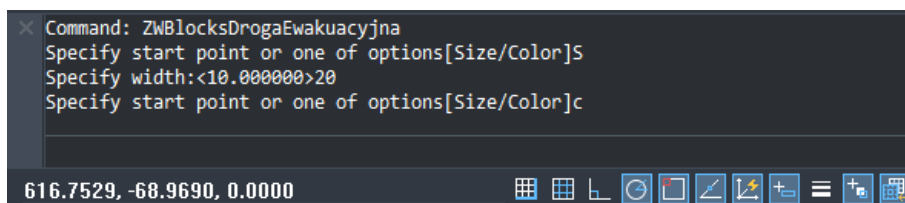
- After activation command enter the shortcut "S" in the command bar and press Enter.
- The default value is 10 units of drawing. Enter the new value and press Enter.



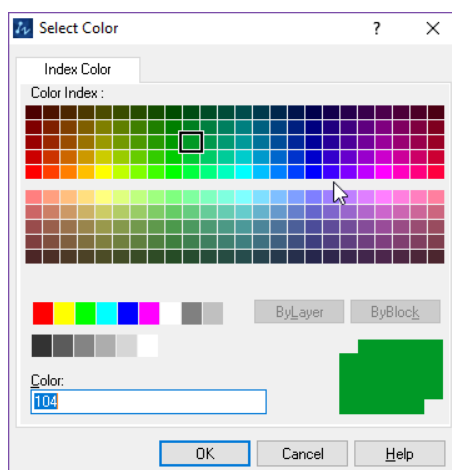
- The width of the arrow is changed.

Change the color of arrow:

- After activation command enter the shortcut "C" in the command bar and press Enter.



- The window appears where you can change the color.

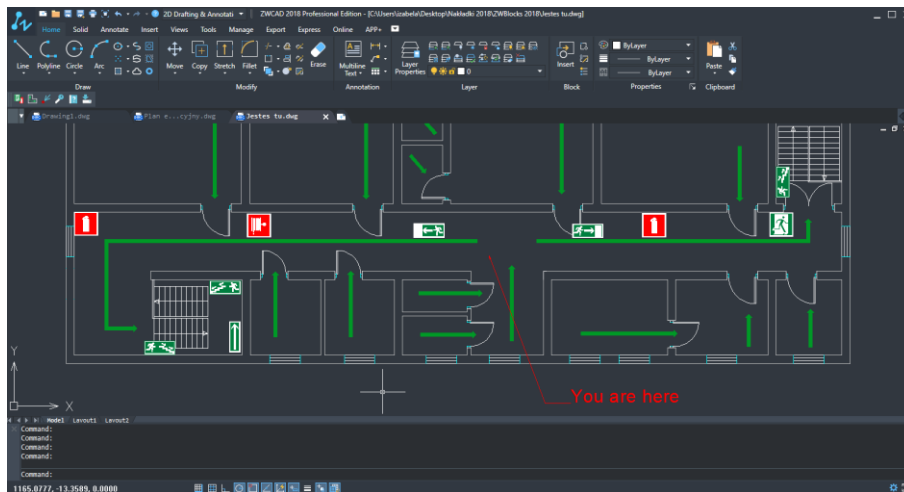


- Select a color and click "OK".
- The color of the arrow is changed.

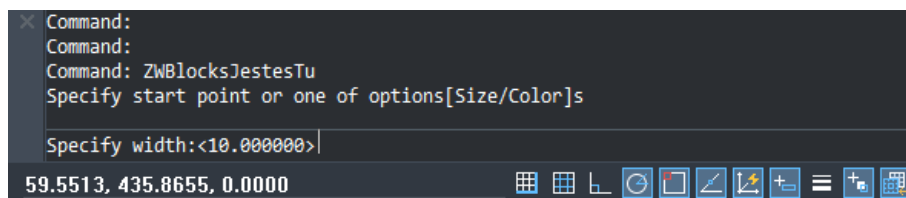
6.3 Marking „You are here”

Funkcja: ZWBLOCKSJestesTu

This function is used to insert on the figure marks the position of the viewer of the building plan. The symbol is the red dot and the line. Localization of line is determines by of the User. At the end line of appears "You are here"



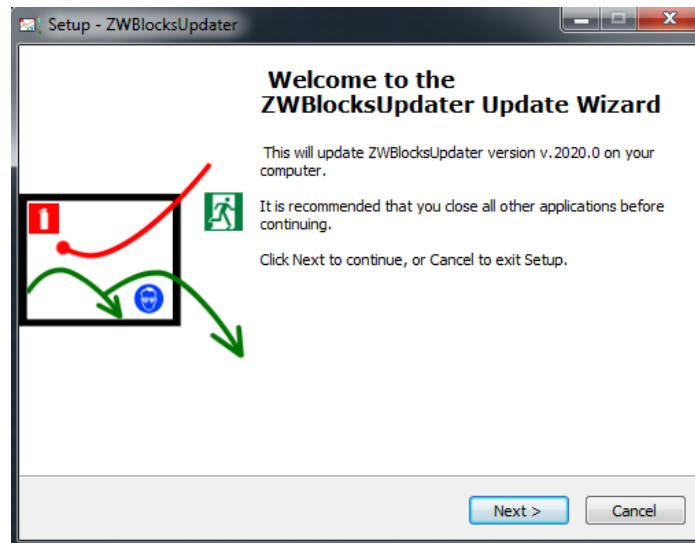
In the properties You can change the default properties: Size and Color.



Size and color change as described in the previous function.

7 Updating ZWBlocks 2020

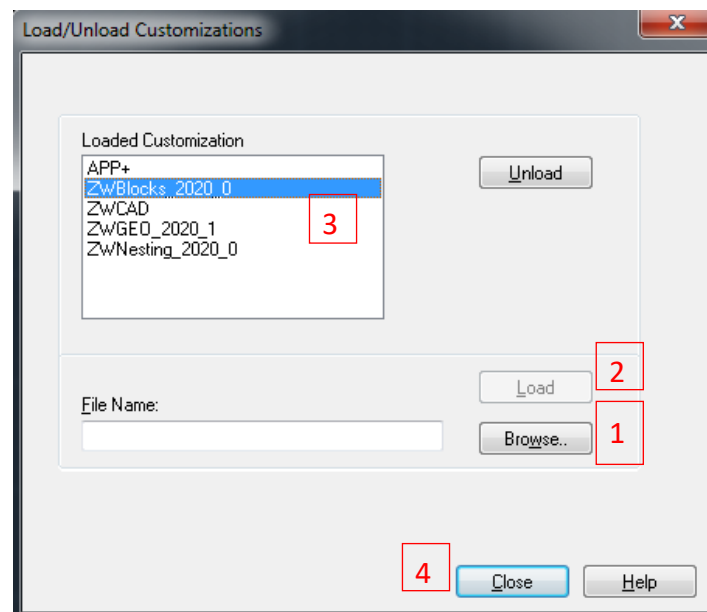
This function allows you to automatically update overlay to a newer version, if it exists.



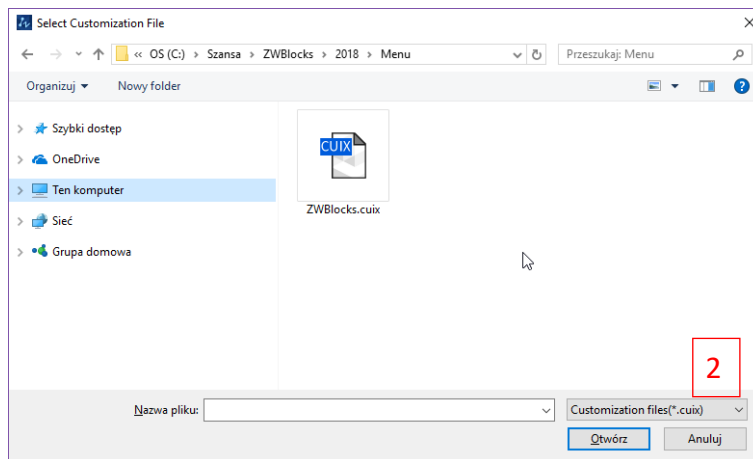
After clicking “Next” will install the newer version.

8 Menu Manual Load

1. In command line please type „_menuload” ZWCAD will display window.



2. Please press button [Browse] [1]. In new window.



Please find file „ZWBlocks.cuix”. Default location of this file is:

C:\Szansa\ZWBlocks\2020\EN\Menu\ - it can be changed during installation.

3. Select file and press [Open].

4. Load file by press „Load”[2].

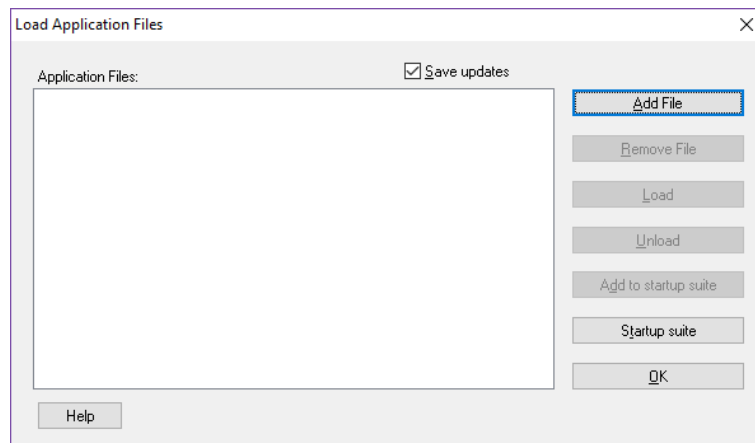
5. On list [3] new item will be displayed, that confirms correct load of menu.

6. By button „Close”[4] you may close the window. On main window of ZWCAD, new toolbar with icons will be displayed.

9 Application Manual Load

After installation of application, it should be automatically loaded in ZWCAD. Functions should be available and toolbar with icons should be visible. If for some reason it's not loaded automatically, you should try and load it manually. To do it, you should follow these steps:

Run command `_appload` and You will see window:



1. Click Add File.
2. In new open window change default extension to .zel. then find path where application have been installed. Default its C:\Szansa\ZWBLOCKS\2020\EN, select file ZWBLOCKS.zelx and click Open.
3. On appload window click Load to load application,
4. If You want application to be loaded automatically each time You run ZWCAD, please select ZWBlocks.zelx on list of files to load, and click button Add to startup suite.